



CONCORD  
— INVEST —



  
CONCORD  
— INVEST —  
REAL ESTATE DEVELOPER

**CASA**  
by Concord Invest





MAKSIMALNA  
PRIVATNOST

SAMO 10 STANOVA

ULICA LUDVIKA  
KUBE-ZAGORIC





Luksuz, kvalitet i elegancija su samo neki od epiteta kojima se ističe naš novi projekat “CASA”

Kvalitet izgradnje, pomno planirani detalji i mogućnost dizajniranja svog vlastitog prostora prava je prilika za sve koji žele stvoriti svoju sigurnost i modernu luku za življenja!









# DIZAJN ULAZA



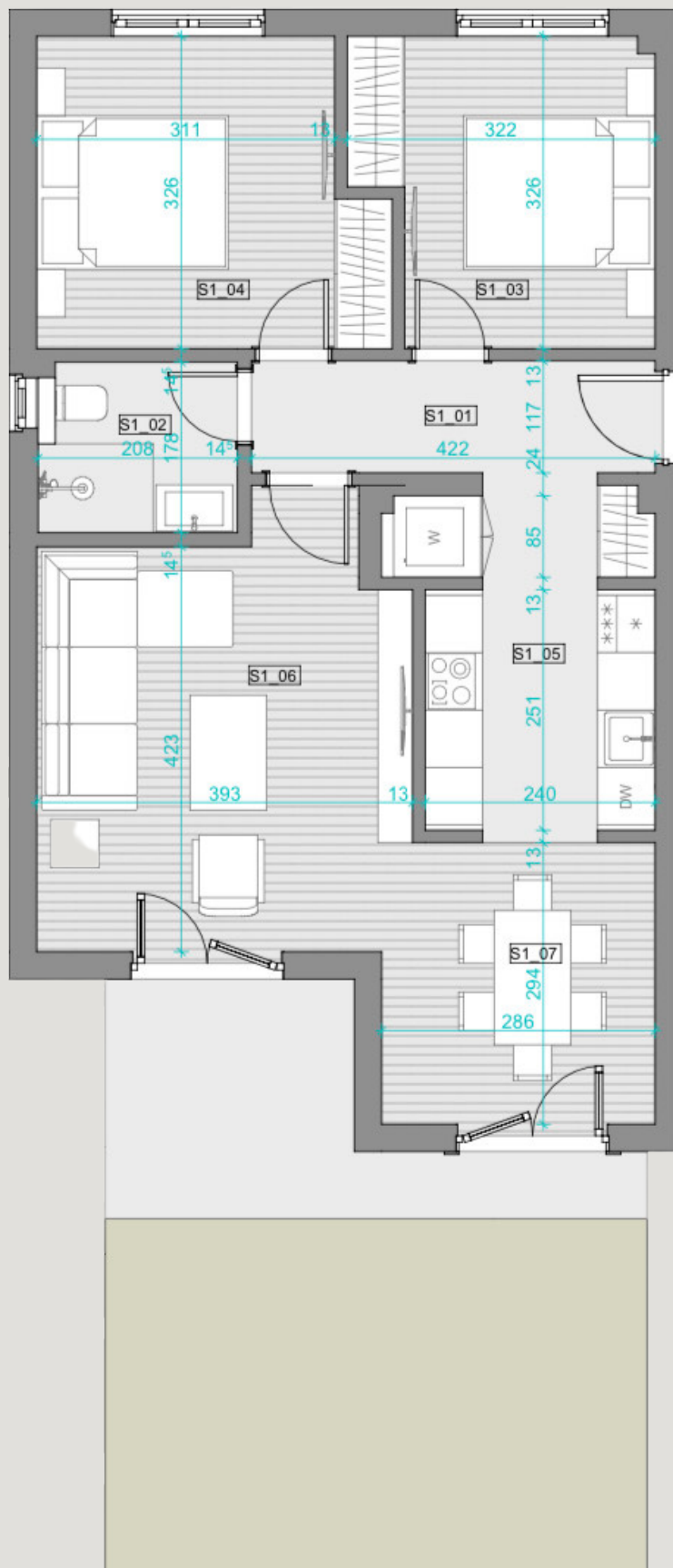
CONCORD INVEST



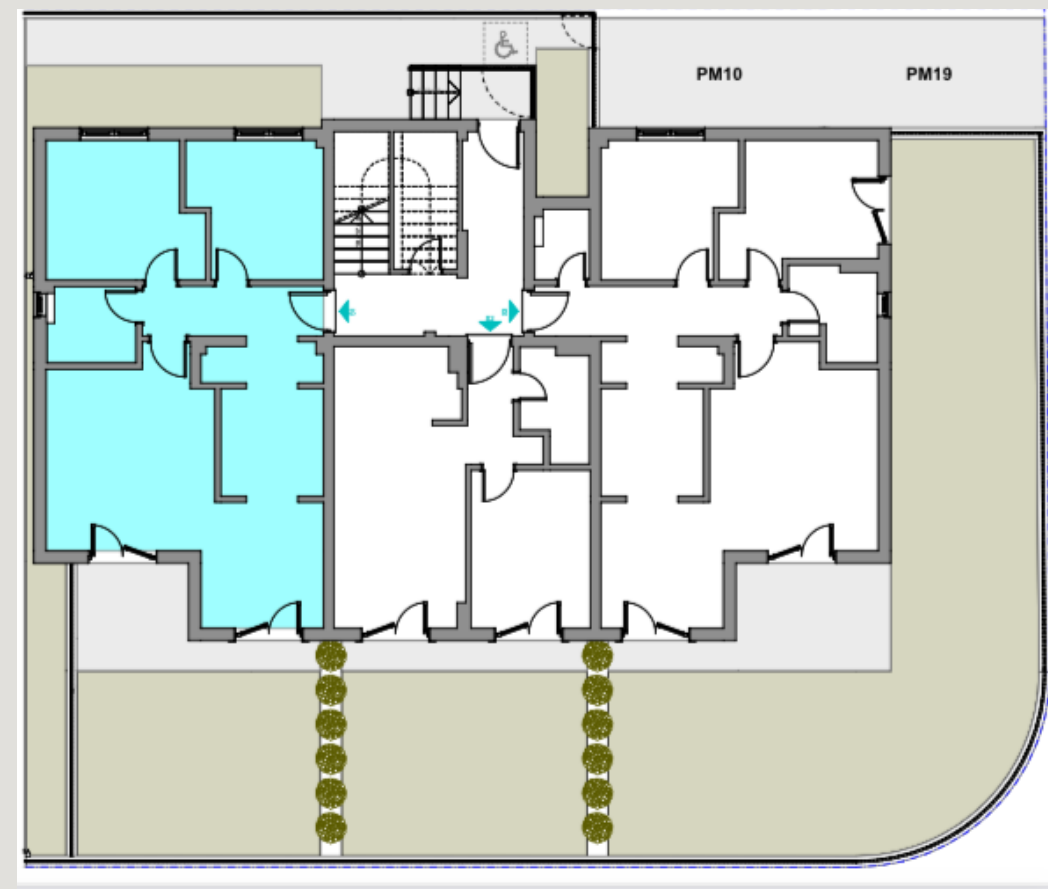
# Osnova stana broj 1

Dvosoban stan - 63.18 m<sup>2</sup>

Visoko prizemlje



Pozicija:



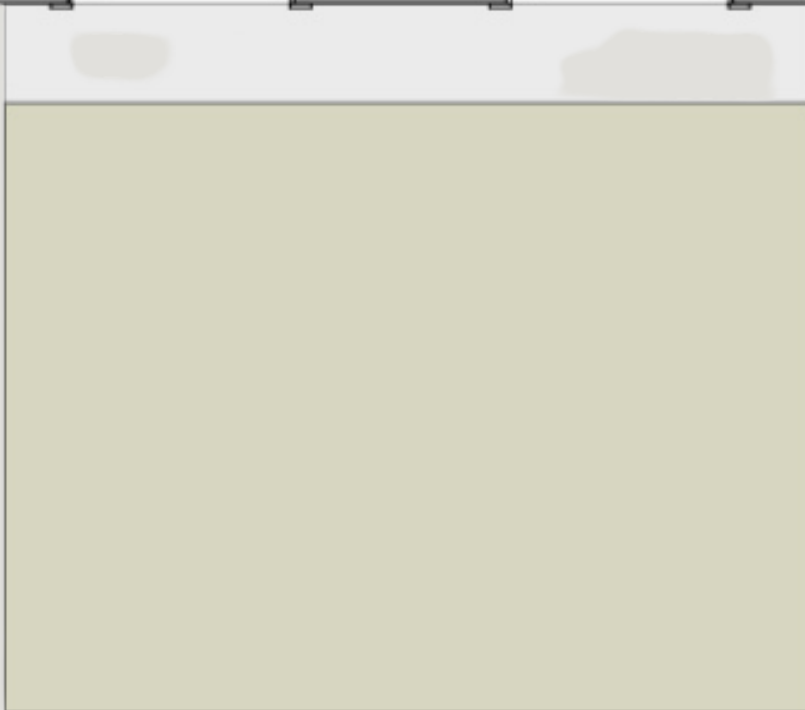
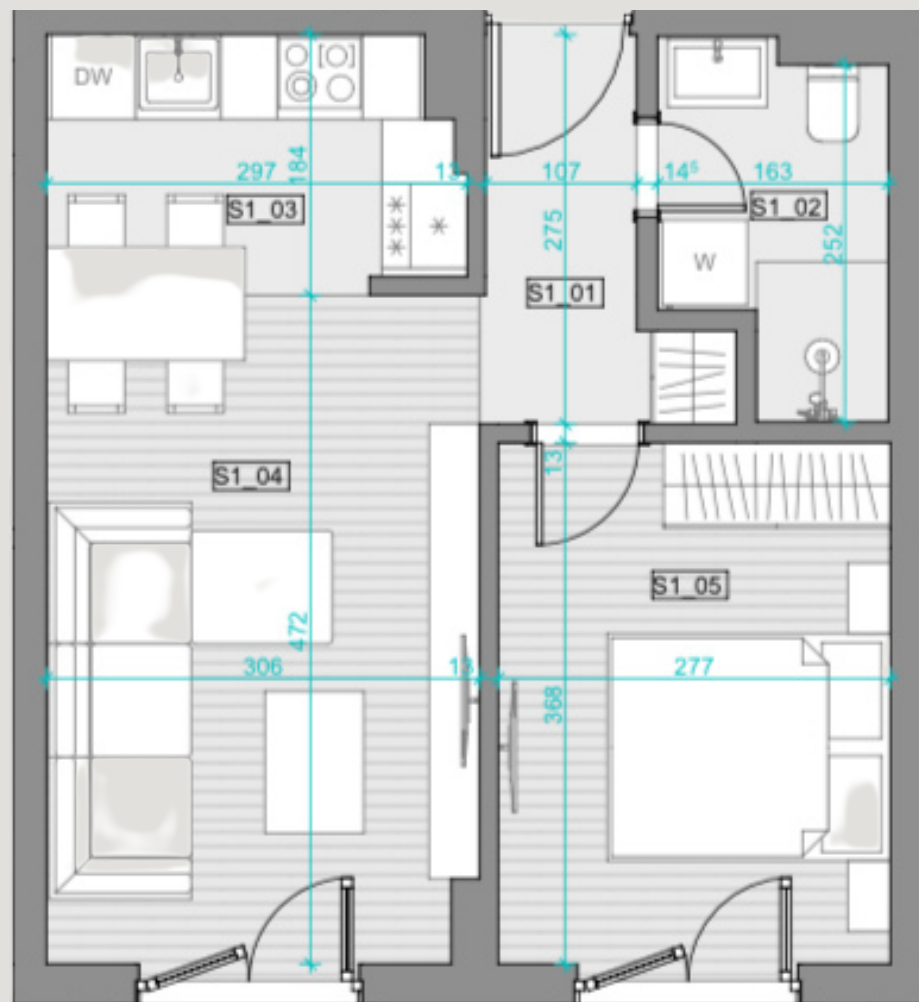
Br.	Namjena prostorije	P (m <sup>2</sup> )
S1_01	Hodnik	4.94 m <sup>2</sup>
S1_02	Kupatilo	3.55 m <sup>2</sup>
S1_03	Spavaća soba	9.45 m <sup>2</sup>
S1_04	Spavaća soba	11.07 m <sup>2</sup>
S1_05	Kuhinja sa vešerajem	9.05 m <sup>2</sup>
S1_06	Dnevni boravak	16.71 m <sup>2</sup>
S1_07	Trpezarija	8.41 m <sup>2</sup>
Ukupna NETO površina stana S1		63.18 m <sup>2</sup>
Dvorište stana S1		33.03 m <sup>2</sup>



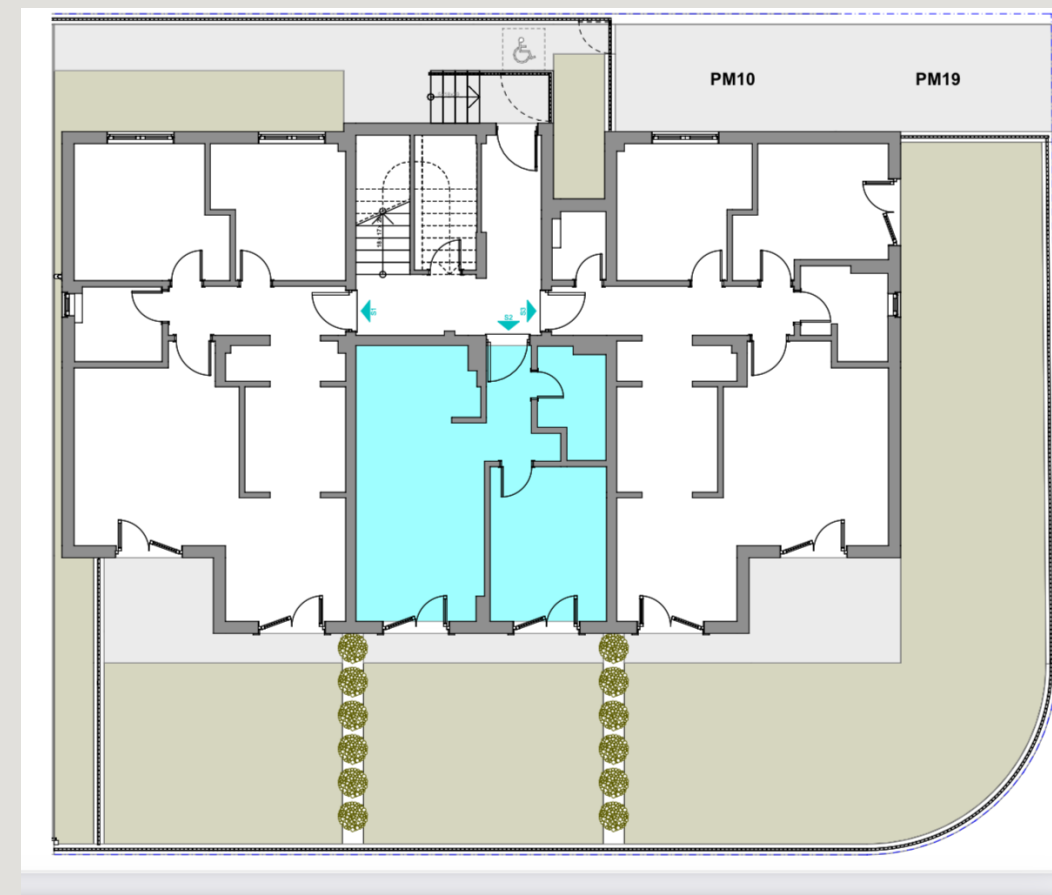
# Osnova stana broj 2

Jednosoban stan - 36.84m<sup>2</sup>

Visoko prizemlje



Pozicija:



Br.	Namjena prostorije	P (m <sup>2</sup> )
S2_01	Hodnik	3.44 m <sup>2</sup>
S2_02	Kupatilo	3.73 m <sup>2</sup>
S2_03	Kuhinja / Trpezarija	7.94 m <sup>2</sup>
S2_04	Dnevni boravak	11.54 m <sup>2</sup>
S2_05	Spavaća soba	10.19 m <sup>2</sup>
Ukupna NETO površina stana S2		36.84 m <sup>2</sup>

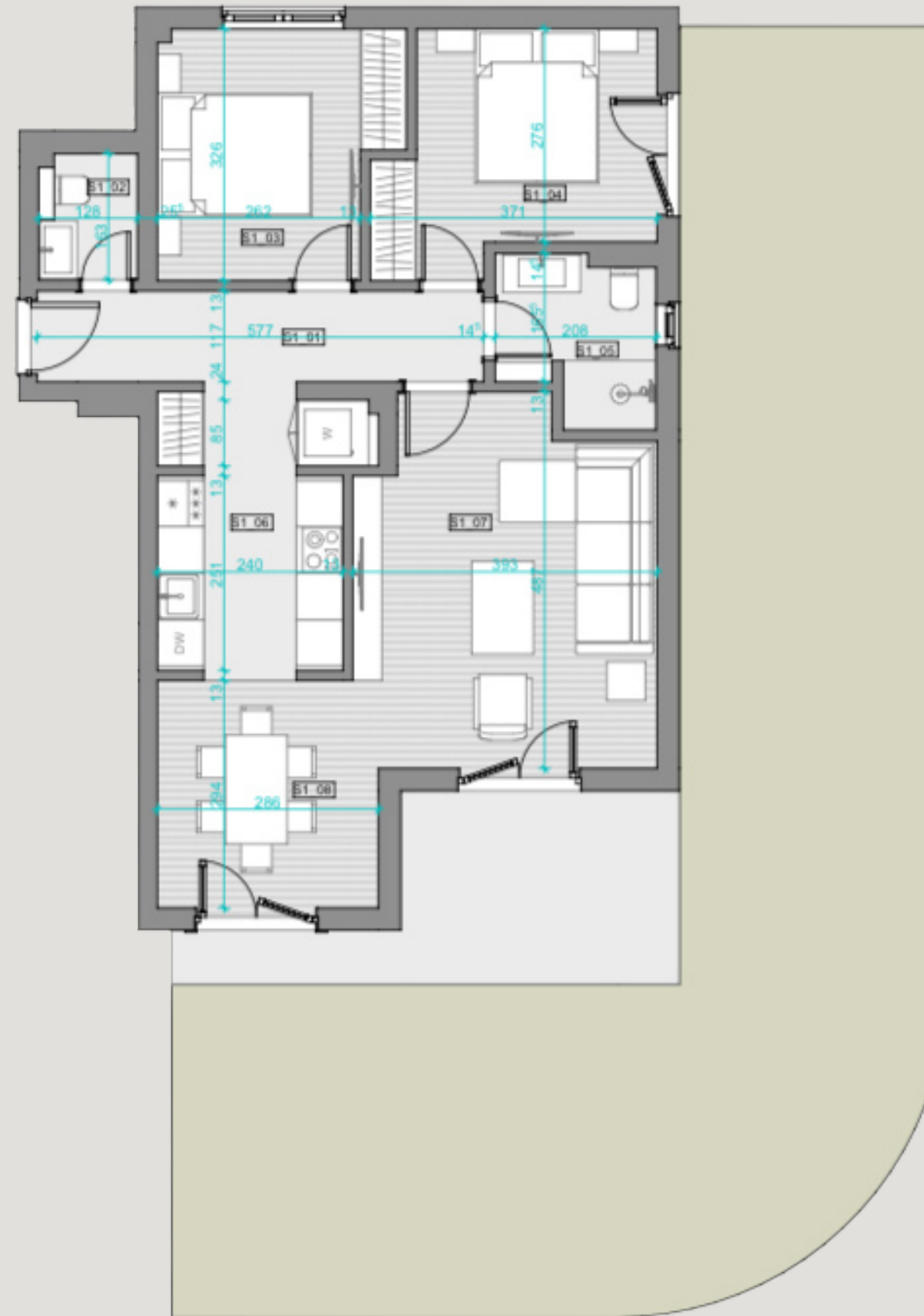
Dvorište stana S2	28.53 m <sup>2</sup>
-------------------	----------------------



# Osnova stana broj 3

Dvosoban stan - 66.83m<sup>2</sup>

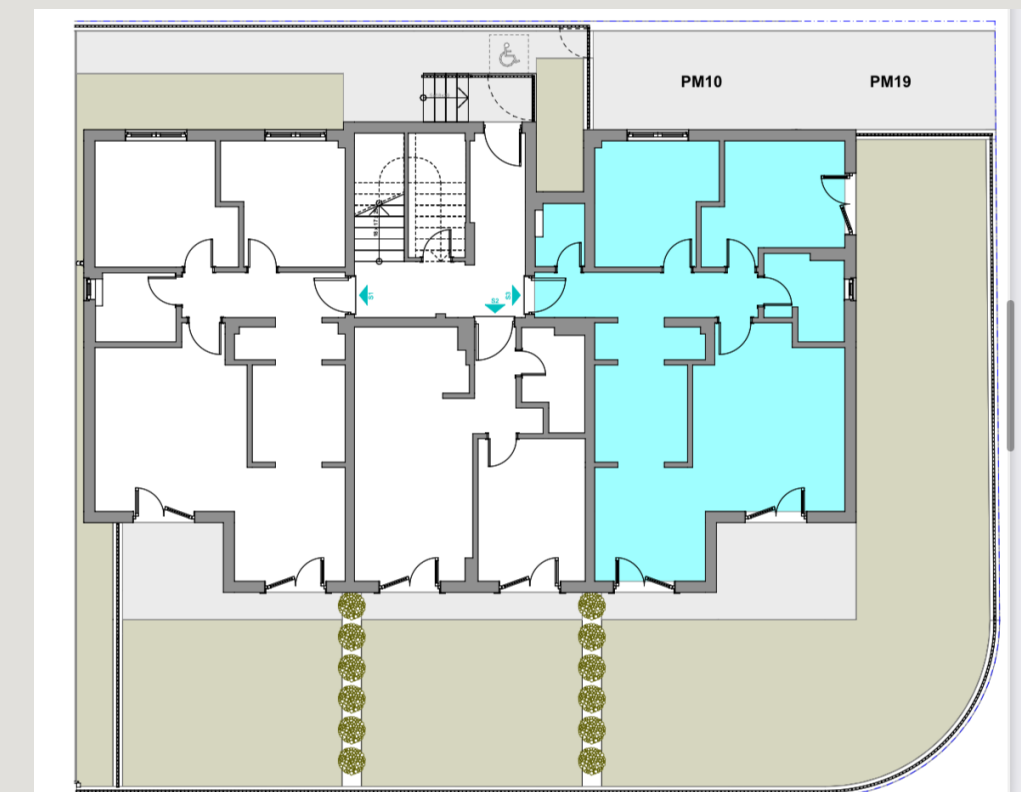
Visoko prizemlje



Br.	Namjena prostorije	P (m <sup>2</sup> )
S3_01	Hodnik	6.75 m <sup>2</sup>
S3_02	Toalet	1.91 m <sup>2</sup>
S3_03	Spavaća soba	9.45 m <sup>2</sup>
S3_04	Spavaća soba	9.95 m <sup>2</sup>
S3_05	Kupatilo	4.04 m <sup>2</sup>
S3_06	Kuhinja sa vešerajem	9.10 m <sup>2</sup>
S3_07	Dnevni boravak	17.22 m <sup>2</sup>
S3_08	Trpezarija	8.41 m <sup>2</sup>
Ukupna NETO površina stana S3		66.83 m <sup>2</sup>

Dvorište stana S3	92.55 m <sup>2</sup>
-------------------	----------------------

Pozicija:

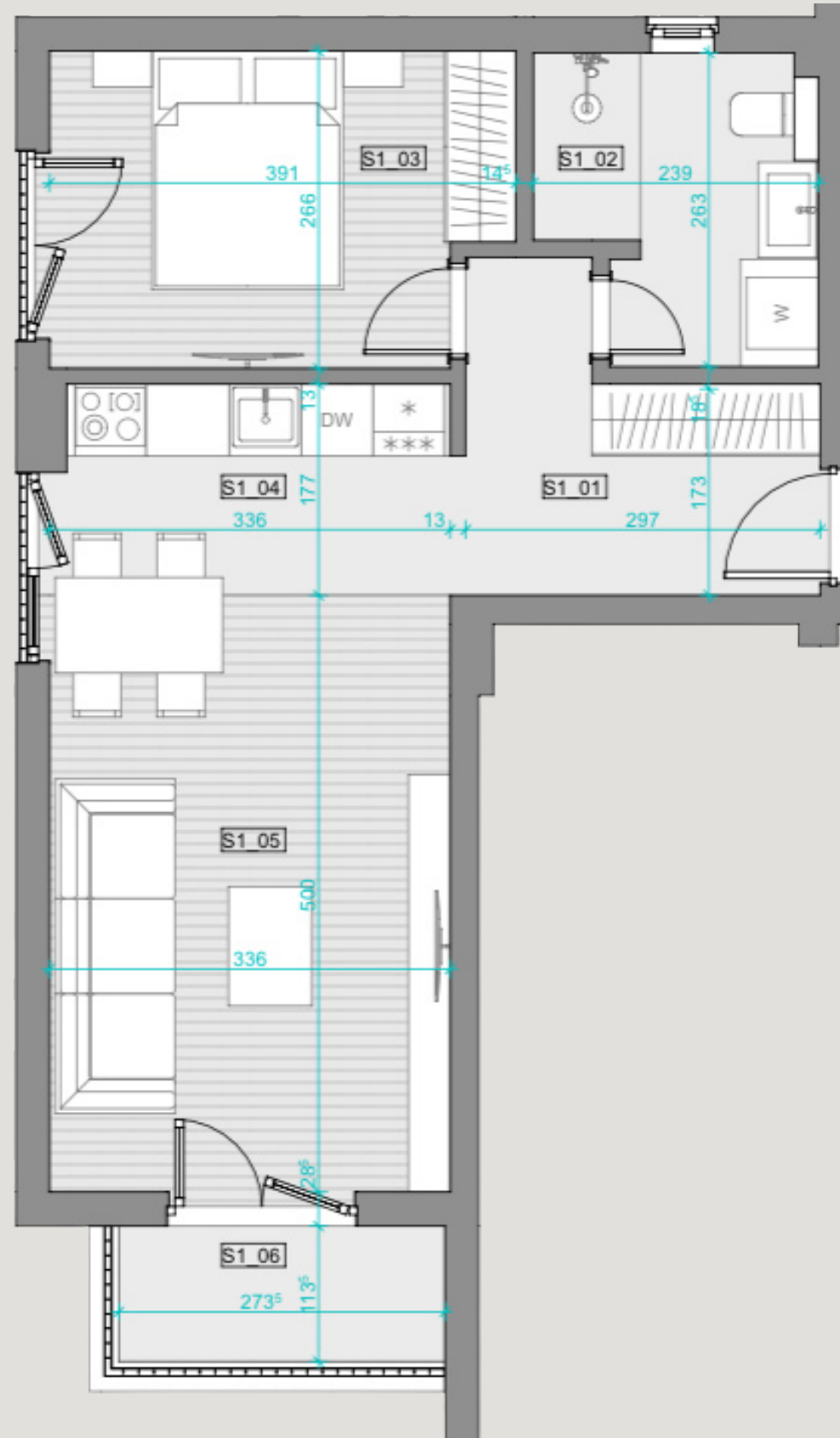




# Osnova stana broj 4

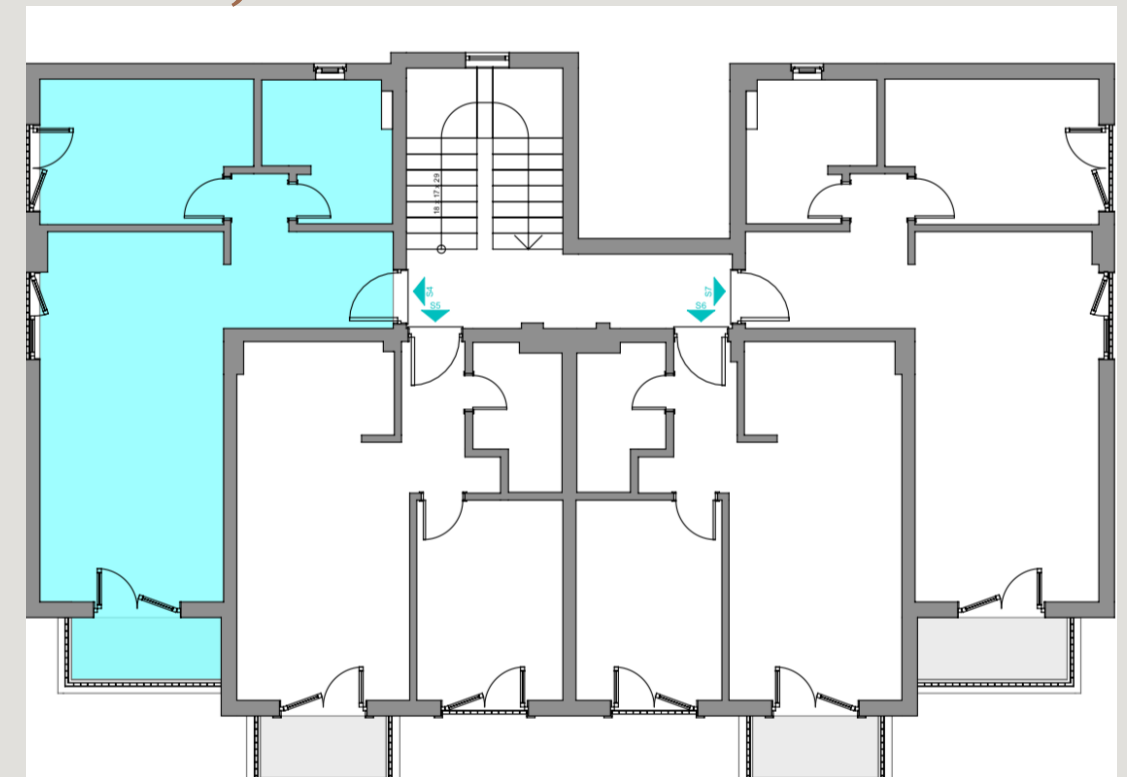
Jednosoban stan - 48.09m<sup>2</sup>

1. sprat



Br.	Namjena prostorije	P (m <sup>2</sup> )
S4_01	Hodnik	6.38 m <sup>2</sup>
S4_02	Kupatilo	5.39 m <sup>2</sup>
S4_03	Spavaća soba	9.82 m <sup>2</sup>
S4_04	Kuhinja sa trpezarijom	9.42 m <sup>2</sup>
S4_05	Dnevni boravak	13.37 m <sup>2</sup>
S4_06	Terasa	3.71 m <sup>2</sup>
Ukupna NETO površina stana S4		48.09 m <sup>2</sup>

Pozicija:

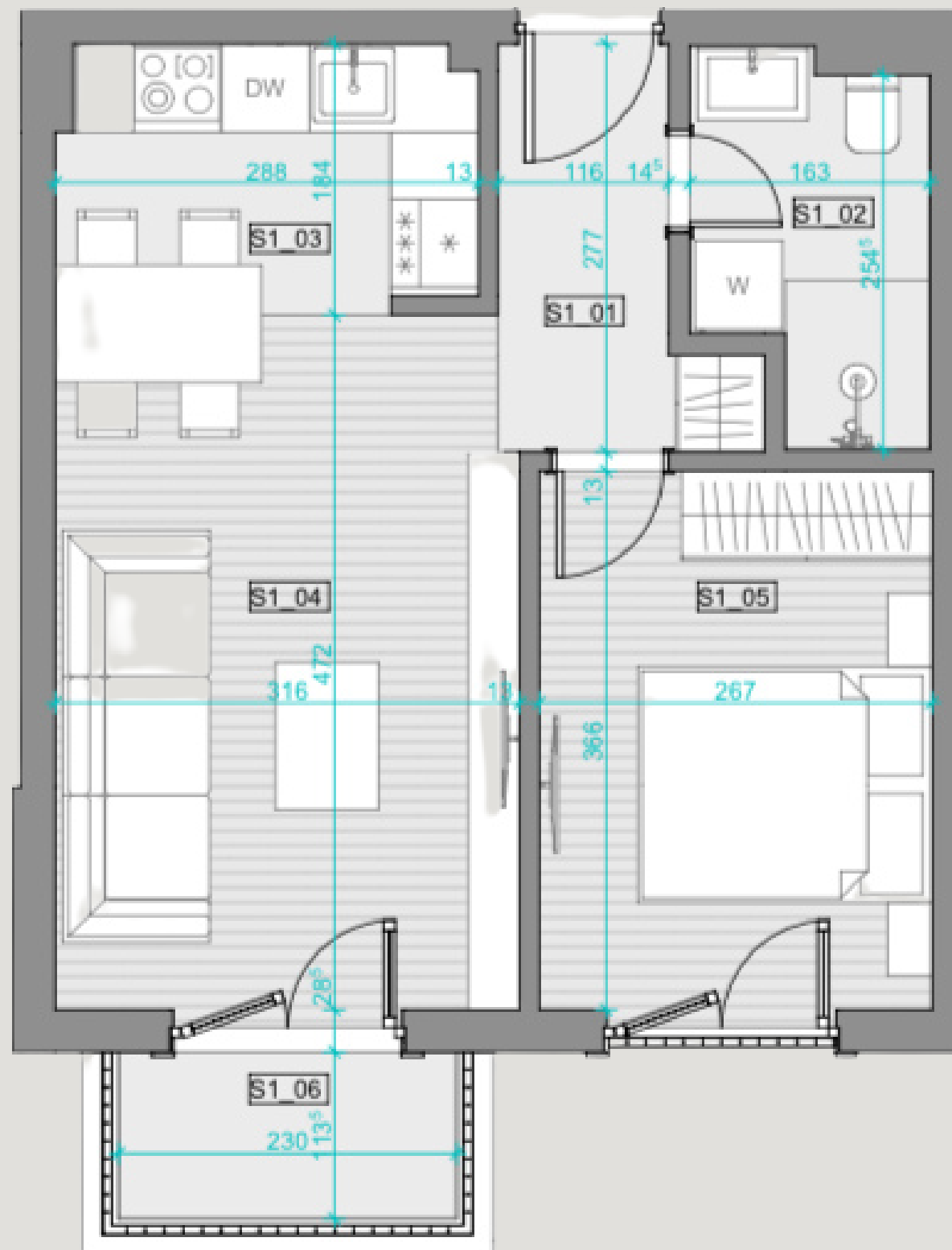




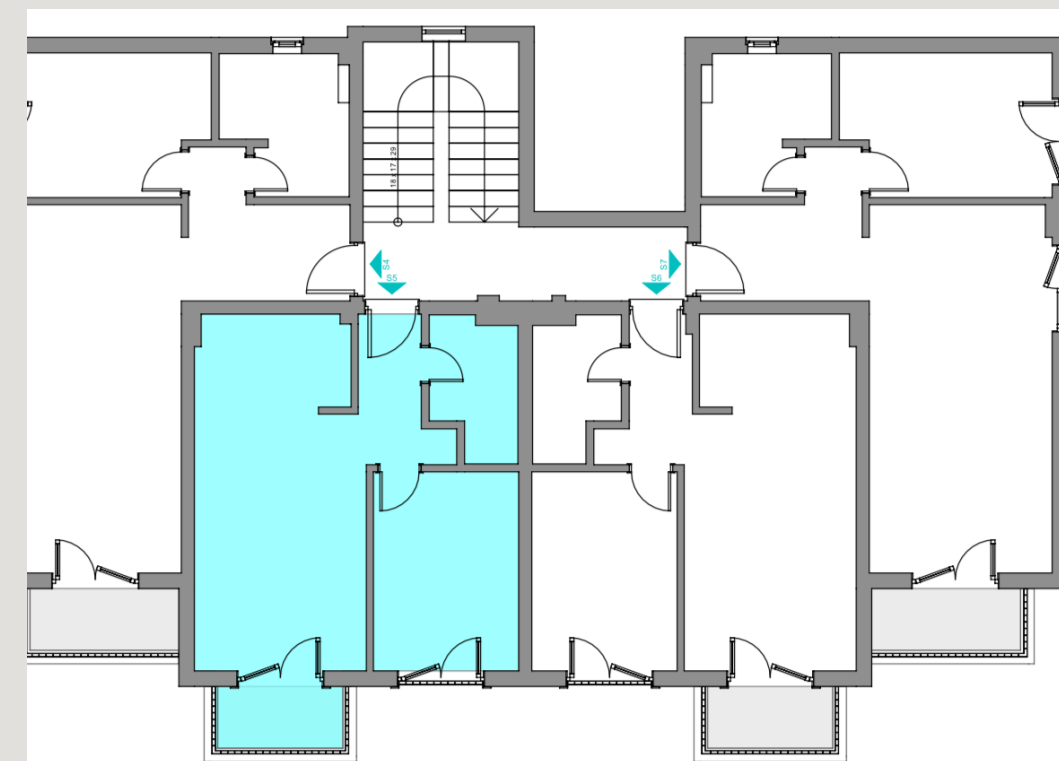
# Osnova stana broj 5

Jednosobvan stan - 40.44m<sup>2</sup>

1. sprat



Pozicija:



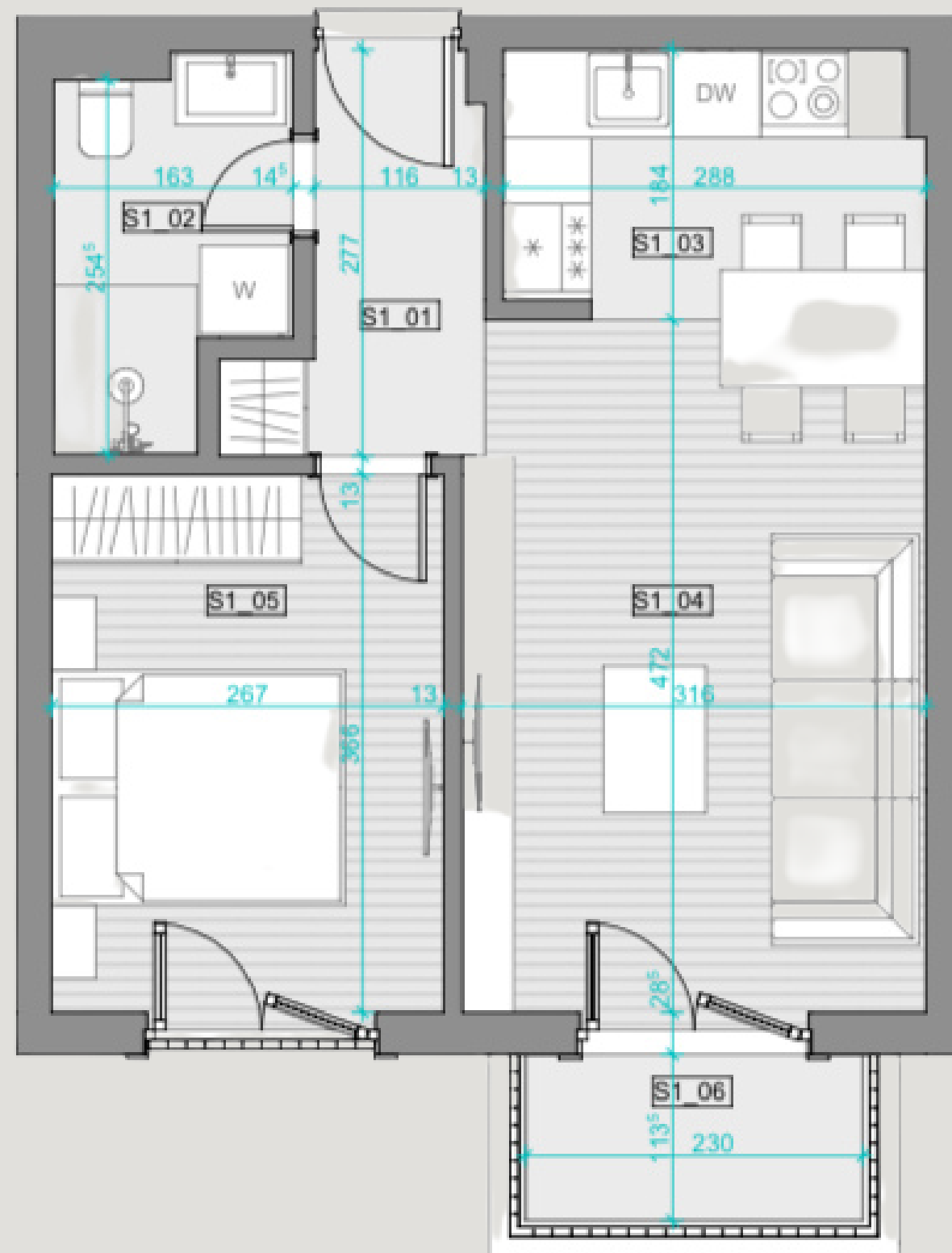
Br.	Namjena prostorije	P (m <sup>2</sup> )
S5_01	Hodnik	3.64 m <sup>2</sup>
S5_02	Kupatilo	3.80 m <sup>2</sup>
S5_03	Kuhinja / Trpezarija	7.91 m <sup>2</sup>
S5_04	Dnevni boravak	11.98 m <sup>2</sup>
S5_05	Spavaća soba	9.77 m <sup>2</sup>
S5_06	Terasa	3.34 m <sup>2</sup>
Ukupna NETO površina stana S5		40.44 m <sup>2</sup>



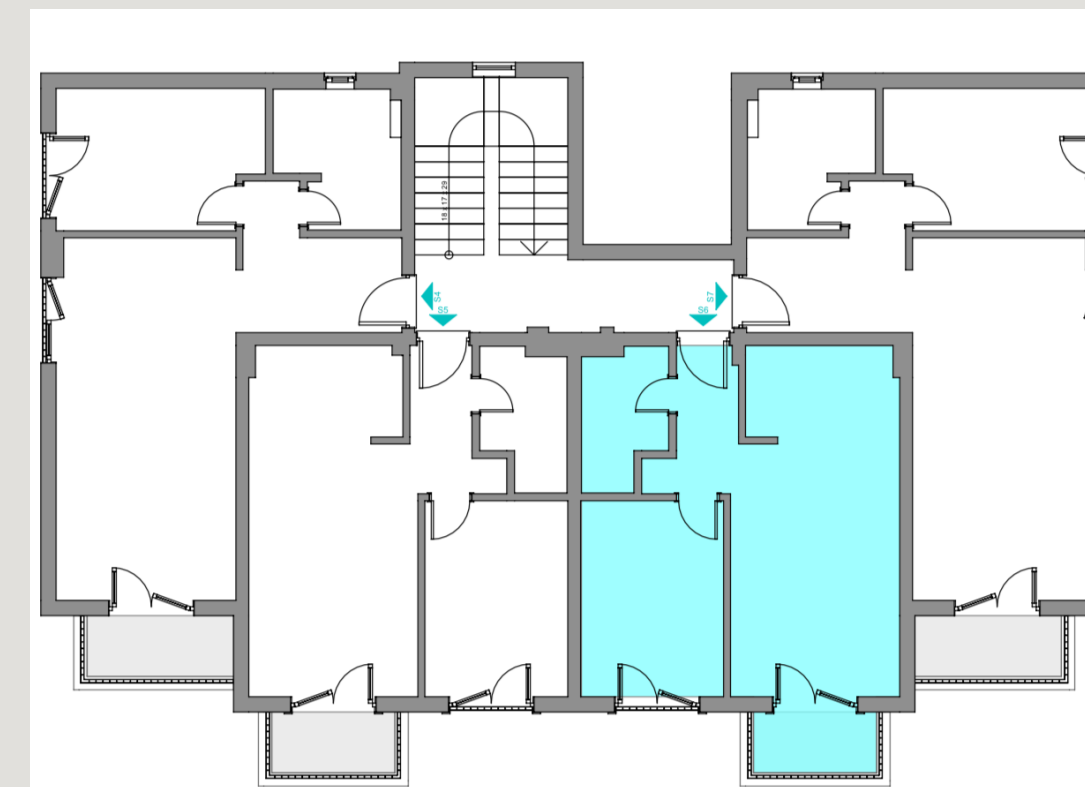
# Osnova stana broj 6

Jednosoban stan - 40.44m<sup>2</sup>

1. sprat



Pozicija:



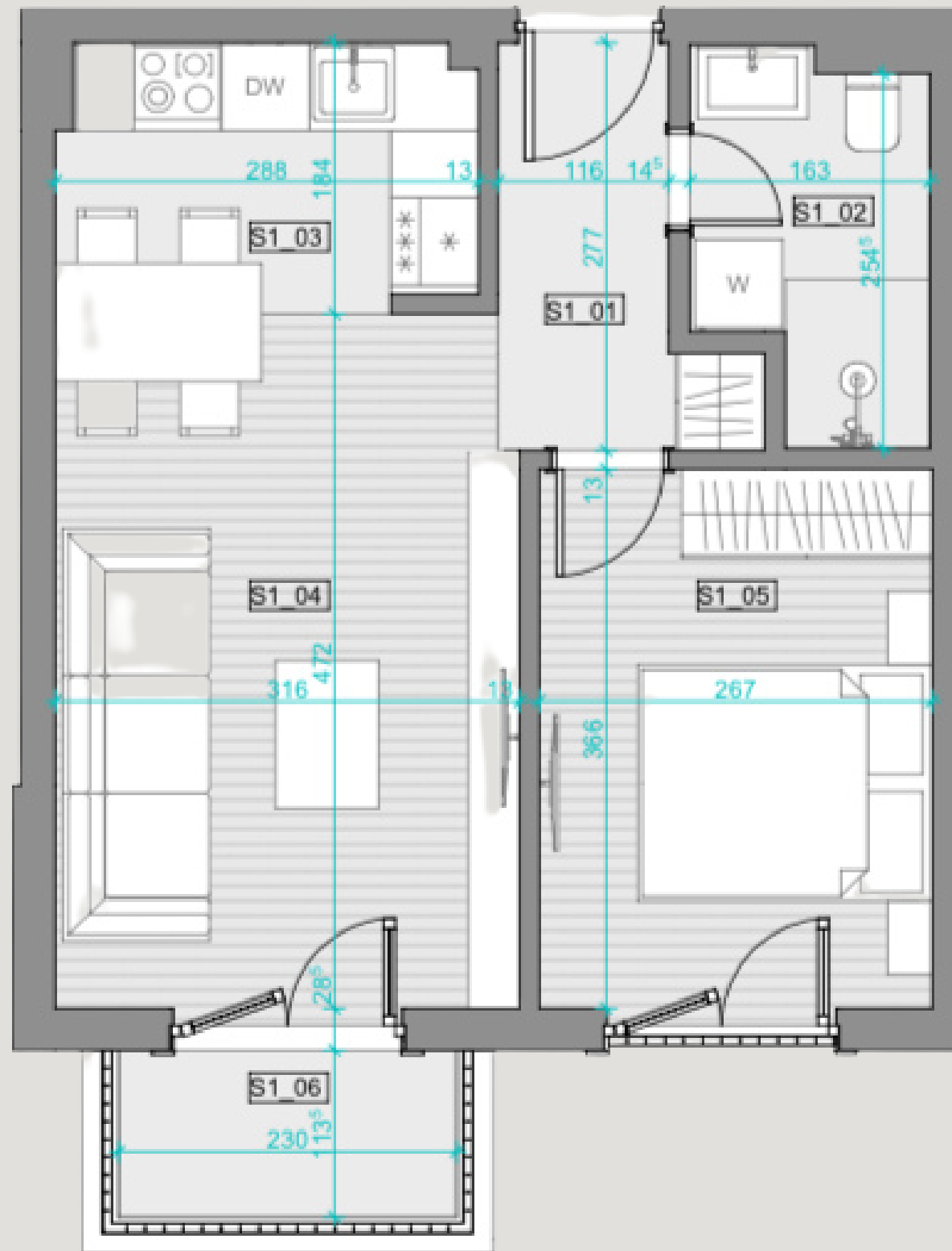
Br.	Namjena prostorije	P (m <sup>2</sup> )
S6_01	Hodnik	3.60 m <sup>2</sup>
S6_02	Kupatilo	3.80 m <sup>2</sup>
S6_03	Kuhinja / Trpezarija	7.95 m <sup>2</sup>
S6_04	Dnevni boravak	11.98 m <sup>2</sup>
S6_05	Spavaća soba	9.77 m <sup>2</sup>
S6_06	Terasa	3.34 m <sup>2</sup>
Ukupna NETO površina stana S6		40.44 m <sup>2</sup>



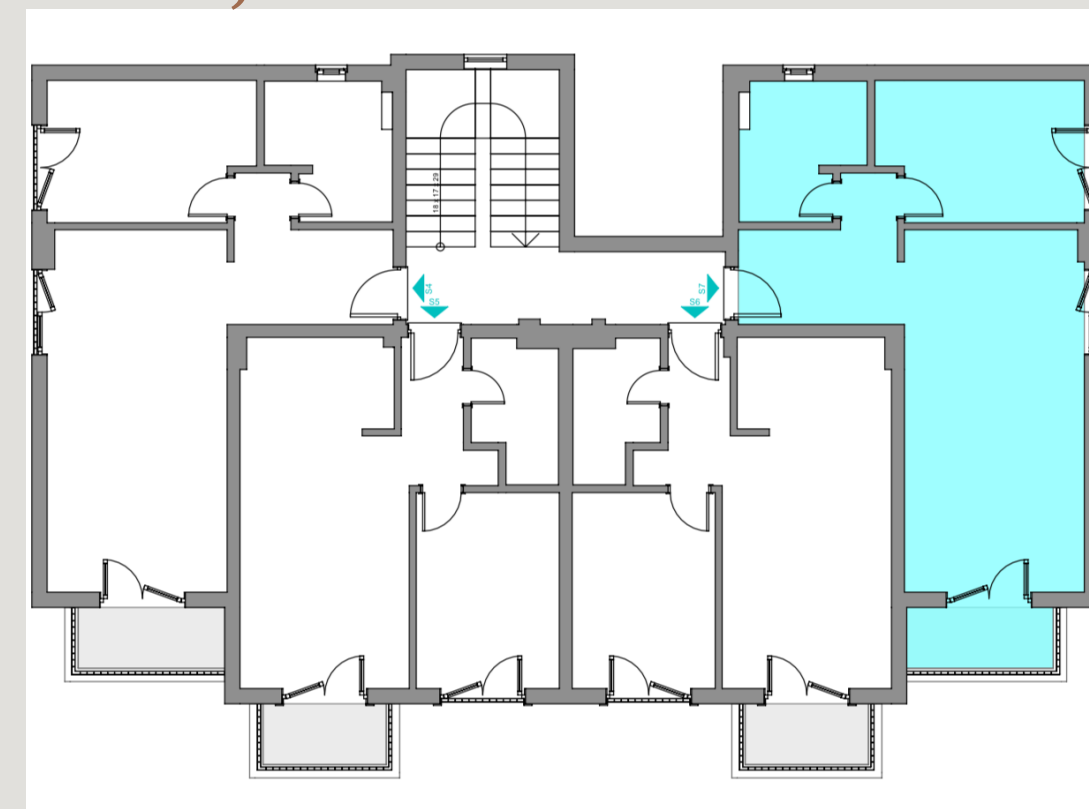
# Osnova stana broj 7

Jednosoban stan - 48.19m<sup>2</sup>

1. sprat



Pozicija:



Br.	Namjena prostorije	P (m <sup>2</sup> )
S7_01	Hodnik	6.38 m <sup>2</sup>
S7_02	Kupatilo	5.39 m <sup>2</sup>
S7_03	Spavaća soba	9.82 m <sup>2</sup>
S7_04	Kuhinja sa trpezarijom	9.45 m <sup>2</sup>
S7_05	Dnevni boravak	13.37 m <sup>2</sup>
S7_06	Terasa	3.71 m <sup>2</sup>
Ukupna NETO površina stana S7		48.12 m <sup>2</sup>

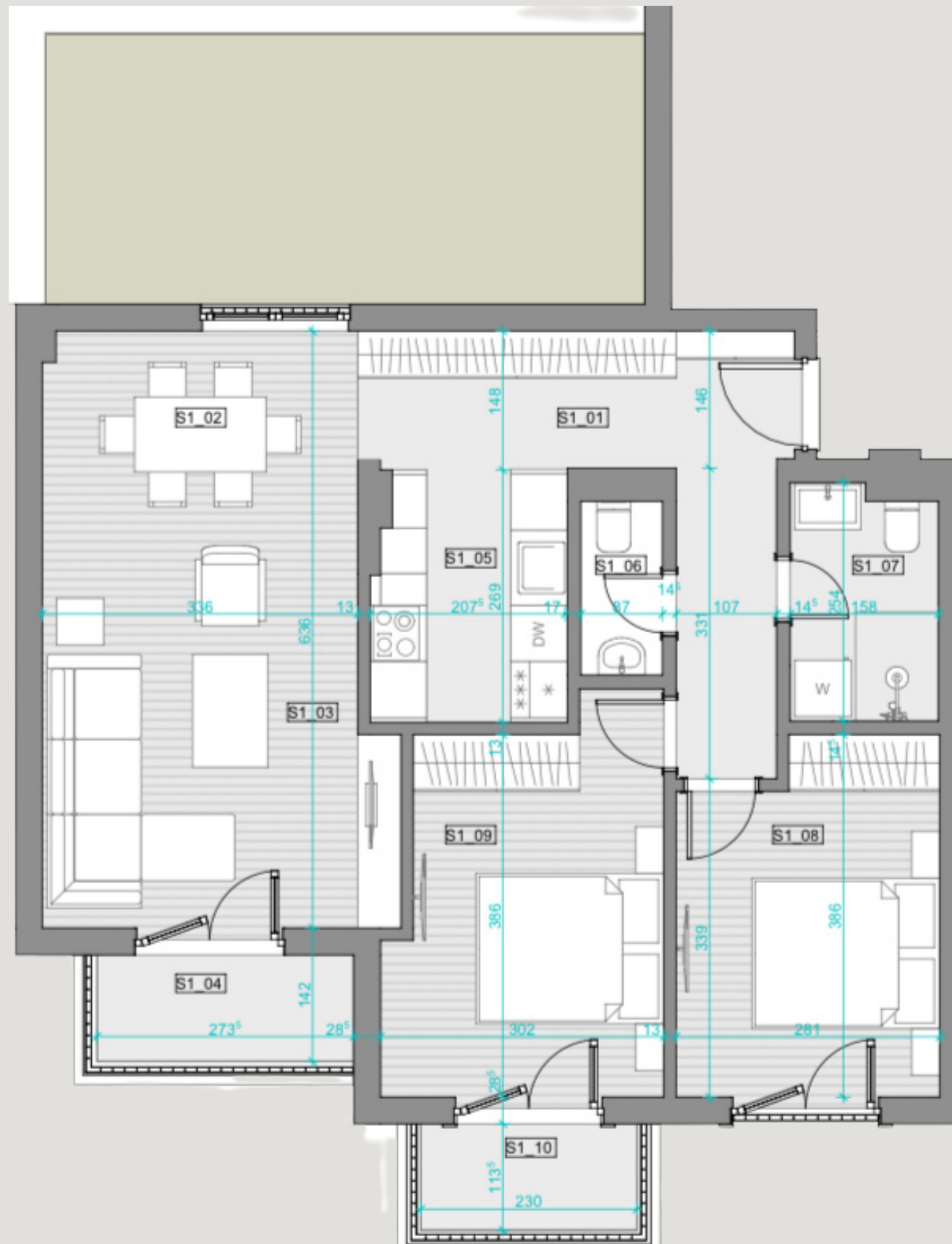


# Osnova stana broj 8

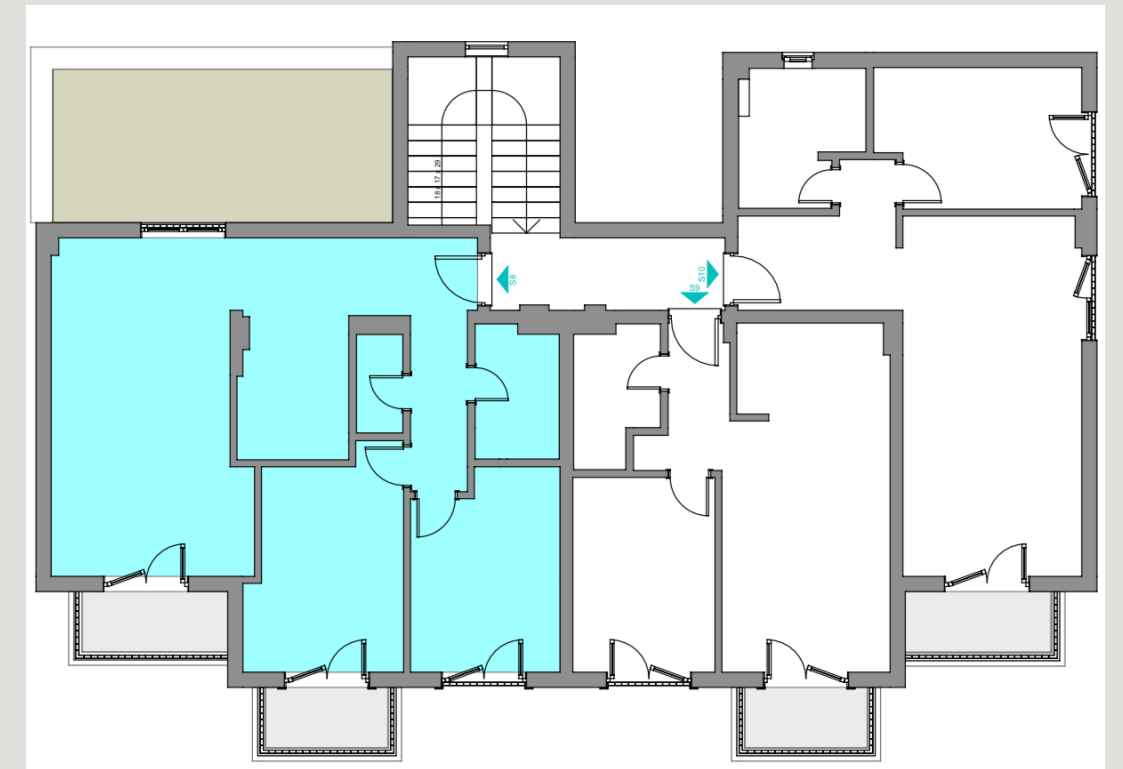
Dvosoban stan - 72.04 m<sup>2</sup>

2. sprat

Br.	Namjena prostorije	P (m <sup>2</sup> )
S8_01	Hodnik	10.32 m <sup>2</sup>
S8_02	Trpezarija	6.24 m <sup>2</sup>
S8_03	Dnevni boravak	16.03 m <sup>2</sup>
S8_04	Terasa	3.71 m <sup>2</sup>
S8_05	Kuhinja	5.47 m <sup>2</sup>
S8_06	Toalet	1.61 m <sup>2</sup>
S8_07	Kupatilo	3.86 m <sup>2</sup>
S8_08	Spavaća soba	10.13 m <sup>2</sup>
S8_09	Spavaća soba	11.33 m <sup>2</sup>
S8_10	Terasa	3.34 m <sup>2</sup>
Ukupna NETO površina stana S8		72.04 m <sup>2</sup>
Terasa stana S8		18.42 m <sup>2</sup>



Pozicija:

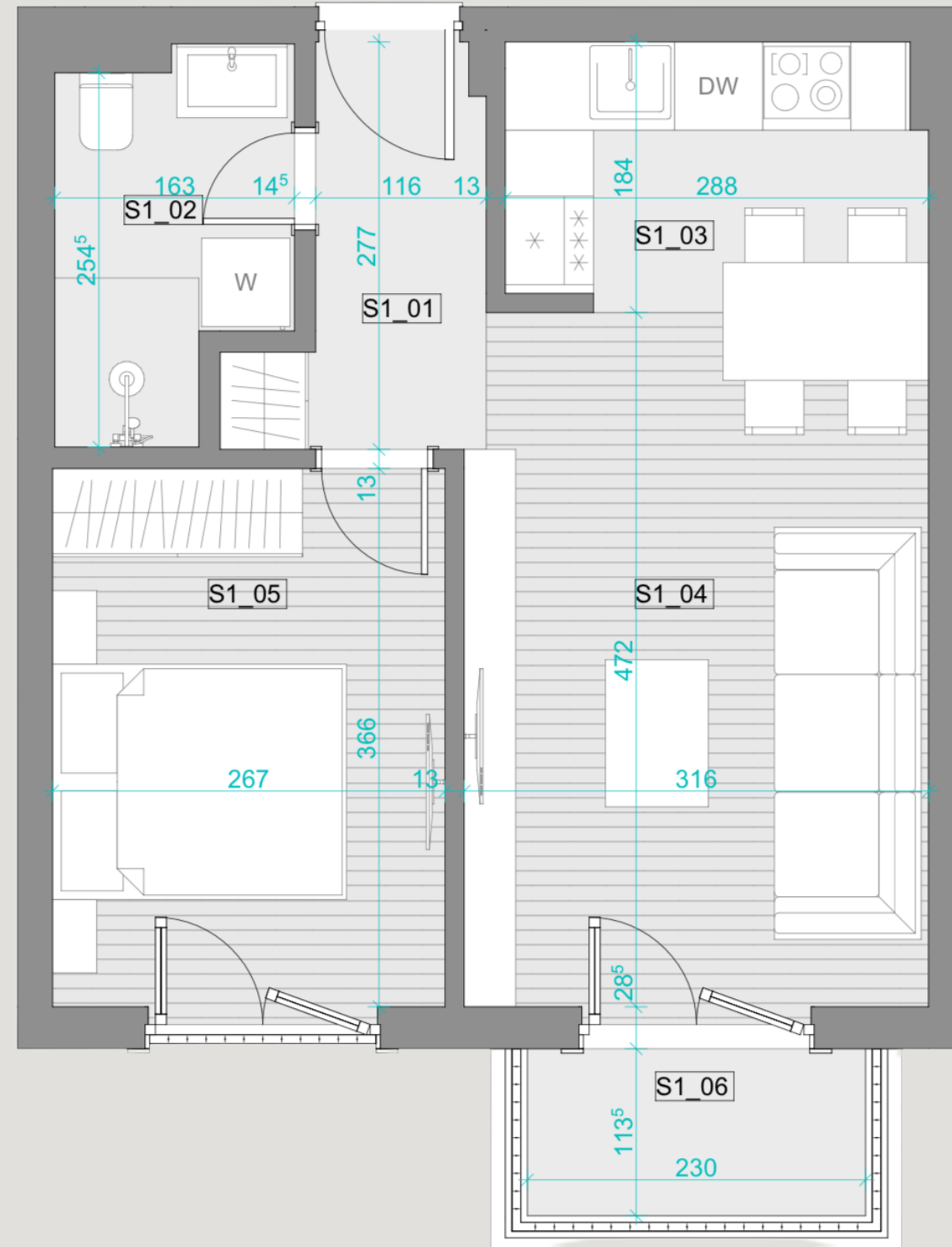




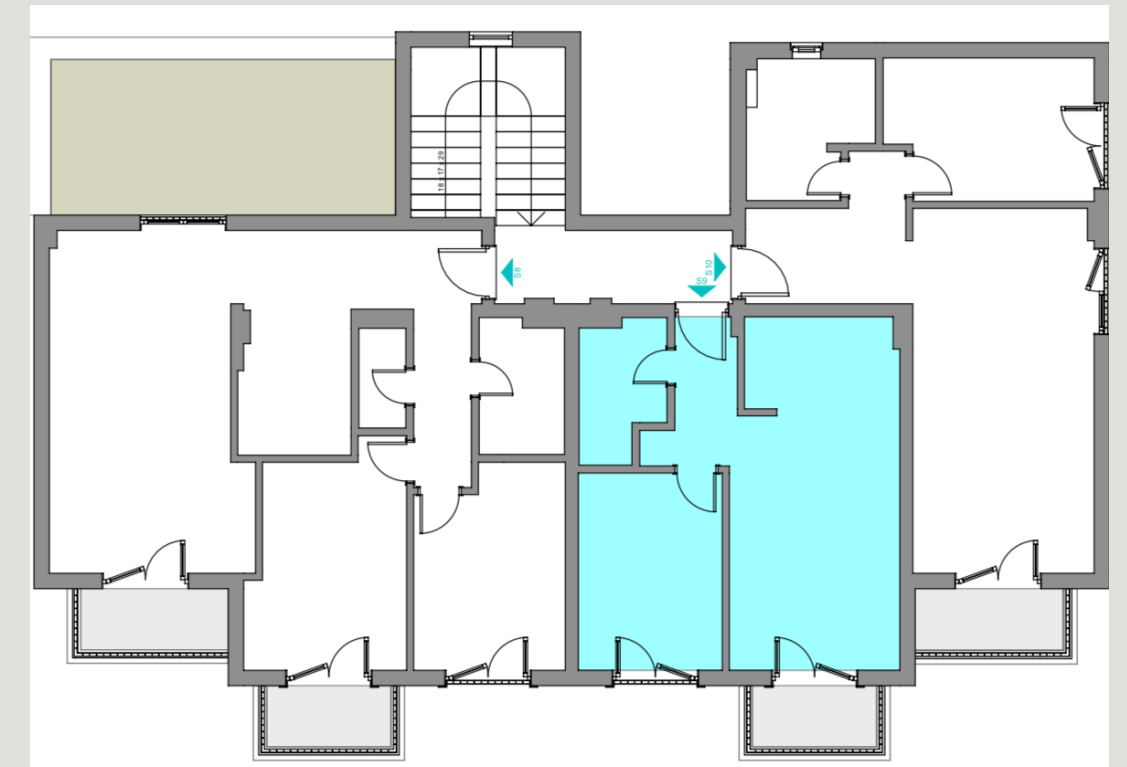
# Osnova stana broj 9

Jednosoban stan - 40-.41m<sup>2</sup>

2. sprat



Pozicija:



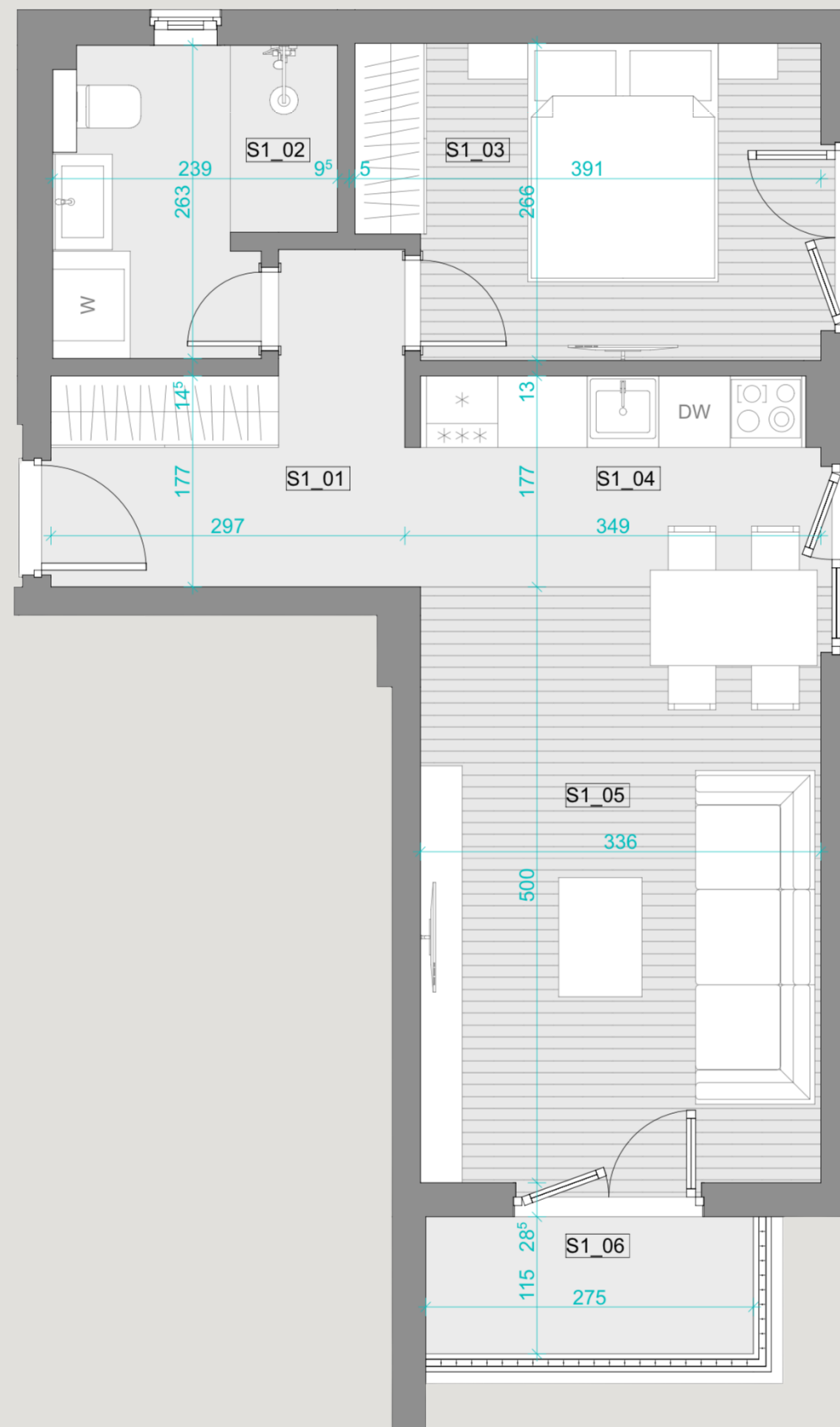
Br.	Namjena prostorije	P (m <sup>2</sup> )
S9_01	Hodnik	3.60 m <sup>2</sup>
S9_02	Kupatilo	3.80 m <sup>2</sup>
S9_03	Kuhinja sa trpezarijom	7.92 m <sup>2</sup>
S9_04	Dnevni boravak	11.98 m <sup>2</sup>
S9_05	Spavaća soba	9.77 m <sup>2</sup>
S9_06	Terasa	3.34 m <sup>2</sup>
Ukupna NETO površina stana S9		40.41 m <sup>2</sup>



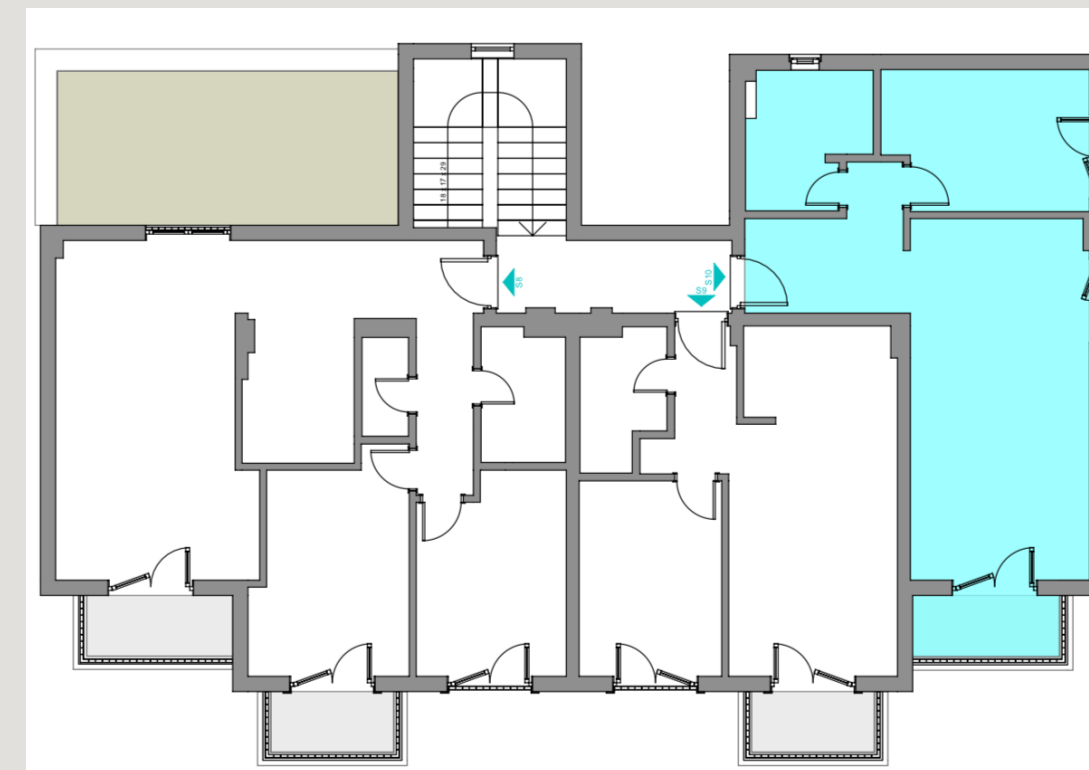
# Osnova stana broj 10

Jednosoban stan - 48.19m<sup>2</sup>

2. sprat

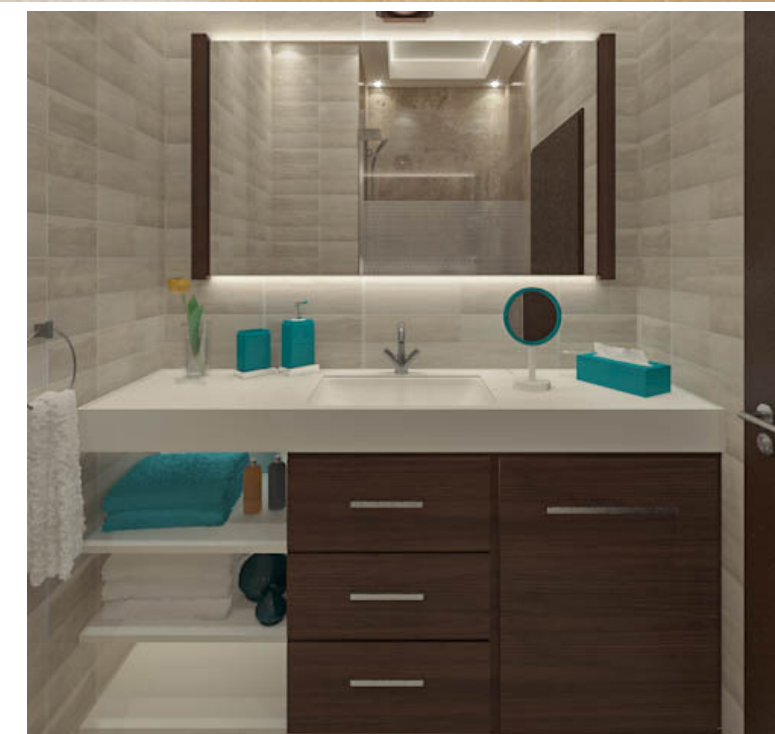


Pozicija:



Br.	Namjena prostorije	P (m <sup>2</sup> )
S10_01	Hodnik	6.38 m <sup>2</sup>
S10_02	Kupatilo	5.39 m <sup>2</sup>
S10_03	Spavaća soba	9.82 m <sup>2</sup>
S10_04	Kuhinja sa trpezarijom	9.49 m <sup>2</sup>
S10_05	Dnevni boravak	13.34 m <sup>2</sup>
S10_06	Terasa	3.77 m <sup>2</sup>
Ukupna NETO površina stana S10		48.19 m <sup>2</sup>

SVAKA PROSTORIJA  
PAZLJIVO OSMISLJENA











**C O N C O R D**  
— INVEST —  
REAL ESTATE DEVELOPER

CONTACT

Concord Invest D.O.O.  
Vlada Cetkovicica 81000  
Podgorica  
Montenegro

Tel +382 67 224 226  
info@concordinvest.me

[www.concordinvest.me](http://www.concordinvest.me)

Partneri:

